

STOUFFVILLE DAY CAMPS

recreation
fitness & swimming
19 on the park
museum
summer planner
activity pages

 Stouffville
Summer 2024

MAYOR'S MESSAGE

On behalf of Council, welcome to our Stouffville Day Camps Guide. Our incredible programming team has put together a wide array of camp offerings for children of all ages and abilities. We hope you will find several camps that work for you and your family within these pages. Our team looks forward to meeting all your camp heroes in 2024!

Be well, **Iain Lovatt, Mayor**

Summer 2024 Camps GUIDE CONTENTS

camp details	2
camp locations	3
staff qualifications	4
camp categories	6
recreation	8
swimming & fitness	16
summer planner	19
camps snapshot	20
activity pages	22
19 on the park	26
museum	30
before & after care	35
registration info	36
inclusion support	37
things to know	38
contact info	38
what to bring	40

It's time to begin your 2024 summer adventure with **STOUFFVILLE DAY CAMPS!**

Weeks that camps are available:

	Sun	Mon	Tue	Wed	Thu	Fri	Sat
Week 1		★ 1	2	3	4	5	6
Week 2	7	8	9	10	11	12	13
Week 3	14	15	16	17	18	19	20
Week 4	21	22	23	24	25	26	27
Week 5	28	29	30	31	1	2	3
Week 6	4	★ 5	6	7	8	9	10
Week 7	11	12	13	14	15	16	17
Week 8	18	19	20	21	22	23	24
Week 9	25	26	27	28	29	30	31

■ July ■ August ★ Holiday (no camp)

👤 **READY TO REGISTER?**

Registration for Stouffville residents opens February 6 at 12 noon on townofws.ca/active

Visit page 36 for all you need to know to get started!

CAMP DETAILS

❤️ Before and After Care

Select locations offer Before & After Care for added flexibility.

❤️ Look for this symbol to identify which camps offer before and after care!

Flip to page 35 for more information

🕒 Camp Hours

Most camps run from 9am to 4pm. Camps at 19 on the Park and the Museum run from 8:30am to 4:30pm, and include a 30-minute drop off and pick up window before and after camp.

📅 Holidays

Note that week 1 (July 2-5) and week 6 (Aug. 6-9) are shorter weeks due to holidays.

📋 Summer Planning

Browse through our camp schedule and locations to find the perfect fit for your child's interests and your family's schedule.

Flip to page 19 for a Summer Planner that can help you along the way!



Stop on by for a fun-filled afternoon at our **SUMMER CAMP OPEN HOUSE**

Saturday, May 25th, from 1:00pm – 4:00pm

📍 **Whitchurch-Stouffville Leisure Centre**

Stop on by for a fun-filled day at our Summer Camp Open House! A day designed for parents and campers to connect with our friendly staff, ask questions, and share in the enjoyment of drop-in activities. Get a sneak peek into the exciting summer ahead and secure your child's spot for a memorable season of learning and laughter. See you there!

CAMP LOCATIONS

❤️ Before and after care available at location

Please visit page 35 for important details.

❤️ **Whitchurch–Stouffville Leisure Centre**

2 Park Dr

Whitchurch–Stouffville Museum & Community Centre

14732 Woodbine Ave

19 on the Park

19 Civic Ave

Stouffville Arena

12483 Ninth Line

Stouffville Clippers Sports Complex

120 Weldon Rd

❤️ **Stouffville District Secondary School**

801 Hoover Park Dr

Latcham Hall

8 Park Dr

Lemonville Community Centre

13453 McCowan Rd

Bruce's Mill Conservation Park

3291 Stouffville Rd

Are there certain locations that work better for you than others?

Flip to page 20 for an overview of all camps and their details.

STAFF QUALIFICATIONS AND TRAINING

All Stouffville Camp Staff:

- ✓ Are a minimum of 16 years of age
- ✓ Are certified in Standard First Aid and CPR C
- ✓ Are subject to a Police Vulnerable Sector Screening check
- ✓ Are trained in the High Five Principles of Healthy Childhood Development
- ✓ Receive a full week of on-site training, covering topics like behaviour management, emergency procedures, program planning and communication

Additionally, Aquatic Staff are certified in:

- ✓ National Lifeguard
- ✓ Swim and Lifesaving Instructor

Inclusion Staff receive additional training in:

- ✓ Behaviour Management Systems
- ✓ York Region Summer Camp Inclusion Training

Join our community of hundreds of HAPPY CAMPERS!

2023 Camps Survey Reviews:



"Very impressed with variety, themes, quality of experience and number of openings. Price point made it possible compared to other camps as well. Thanks for putting these programs in place."

- 2023 Camp Parent/Guardian



"We were first time camp participants and our child loved it!"

- 2023 Camp Parent/Guardian



"Thank you to the counsellors that ran the camp; they were so nice and involved."

- 2023 Camp Parent/Guardian



We offer inclusion support!

Discover our commitment to inclusive camps at the Town of Stouffville.

Learn how we ensure accessible experiences for all abilities through our inclusive model, providing 1:1 support. For more details on inclusion services and how to request support, see page 37.



HIGH FIVE® TRAINING

HIGH FIVE® Principles of Healthy Child Development (PHCD) is a training that equips front-line leaders with the tools, knowledge, and resources needed to ensure each child's social, emotional, and cognitive needs are met.

Five Principles of Healthy Child Development:

- A caring leader
- The opportunity to make friends
- The opportunity to play
- The opportunity to master skills
- The opportunity to participate



MEET EMILY!

Camp Coordinator, Summer 2024

Emily has been an invaluable member of the Town of Stouffville team for the past several years.

Alongside her work, Emily is currently pursuing her Master's degree in Developmental Psychology and is passionate about supporting children with exceptionalities. Her enthusiasm for summer camp shines through in her ability to develop long lasting and meaningful relationships with participants.



CAMP CATEGORIES

Keep an eye out for the following colour-coded badges beside each camp title!

All of our camps offer a mix of your favourite activities and games.



General

Engage in a diverse range of activities from arts and crafts to games, fostering creativity, teamwork, and fun in a well-rounded program designed for all interests and ages.



Sports & Fitness

Jump into a world of athleticism and skill development, where campers learn various sports, hone techniques, and embrace the spirit of healthy competition in a dynamic and energetic environment.



Arts

Unleash creativity through various mediums—painting, dancing, drama, and music—allowing campers to express themselves while exploring their artistic talents in a supportive and inspiring setting.



Science

Discover the wonders of science through hands-on experiments, exploration, and discovery, igniting curiosity and fostering a deeper understanding of the natural world and scientific principles.



Adventure

Embark on thrilling adventures, including outdoor activities, team-building challenges, and exploration, encouraging campers to step out of their comfort zones and develop resilience and leadership skills.



Swimming

Dive into a world of aquatic fun and safety! Campers enjoy water-based activities, swimming lessons, and games, promoting water confidence and essential swimming skills in a safe and supervised setting.



STOUFFVILLE
DAY CAMPS

RECREATION

AGES 4 & 5 YRS
MINI CAMPERS:
CAMP LEMONVILLE

📍 Lemonville Community Centre
9:00am - 4:00pm

\$280

This camp offers an activity packed week – focusing on a fun environment while developing social, fine and gross motor skills. Campers will participate in arts, dance, games, sing-a-longs, crafts, and sports. Each week features a unique theme. Don't miss out on the fun!

Week	Theme	Dates	Code
1*	Cooking	July 2 - 5	30932
2	DIY Crafts	July 8 - 12	30929
3	Nature Explorers	July 15 - 19	30934
4	STEAM	July 22 - 26	30931
5	Nature Explorers	July 29 - Aug 2	30933
6*	Cooking	Aug 6 - 9	30935
7	DIY Crafts	Aug 12 - 16	30927
8	Nature Explorers	Aug 19 - 23	30928
9	STEAM	Aug 26 - 30	30930

*\$224 for weeks 1 and 6

Note

At our Mini Camper programs, we prioritize personalized attention, guidance, and safety, maintaining a dedicated ratio of one counsellor for every eight campers.

AGES 4 & 5 YRS
MINI CAMPERS:
FUN IN THE SUN

📍 Latcham Hall
9:00am - 4:00pm

\$280

Join us to embark on a camp adventure where joy, creativity, and friendship are top priority! Our carefully curated program offers a whirlwind of excitement both indoors and outdoors as campers engage in water play, explore the park, and participate in a variety of sports, games, and activities. Each day will be different from the next, with the focus being fun, laughter, and creating meaningful memories.

Week	Dates	Code
1*	July 2 - 5	30952
2	July 8 - 12	30954
3	July 15 - 19	30950
4	July 22 - 26	30951
5	July 29 - Aug 2	30949
6*	Aug 6 - 9	30948
7	Aug 12 - 16	30947
8	Aug 19 - 23	30953
9	Aug 26 - 30	30946

*\$224 for weeks 1 and 6


AGES 6 - 9 YRS
SPORTS CAMP: JUNIOR

Leisure Centre
9:00am - 4:00pm

\$280

♥ **Before and after care available** - see page 35 for details

This camp is for the camper who loves everything sports! Campers will engage in a wide range of sports opportunities throughout the session, as well as collaborative games and activities. Activities are geared to the interests of campers each session and are always kept fresh and exciting.

Week	Dates	Code
1*	July 2 - 5	30937
2	July 8 - 12	30938
3	July 15 - 19	30939
4	July 22 - 26	30940
5	July 29 - Aug 2	30941
6*	Aug 6 - 9	30942
7	Aug 12 - 16	30943
8	Aug 19 - 23	30944
9	Aug 26 - 30	30945

*\$224 for weeks 1 and 6

Note

Extended Care

Please note, only the Leisure Centre and SDSS are eligible for extended care. See page 35 for more important information.



AGES 6 - 10 YRS
STEAM CREATORS CAMP

Stouffville District Secondary School **\$280**
9:00am - 4:00pm

♥ **Before and after care available** - see page 35 for details

Do you like to invent, problem solve, build, and design? This introductory STEAM camp is a great way to discover the world of Science, Technology, Engineering, Arts and Math. Campers will explore their curiosity and creativity in a fun environment, getting hands-on experience with Snap Circuits, MakeDo, Lego, Knex, Ozobots and more!

Week	Dates	Code
2	July 8 - 12	31677
3	July 15 - 19	31678
4	July 22 - 26	31679
5	July 29 - Aug 2	31680
6	Aug 6 - 9 *	31681
7	Aug 12 - 16	31682

*\$224 for week 6


AGES 6 - 12 YRS
CAMP ABILITY

Stouffville Arena
9:00am - 4:00pm

\$280

This adapted camp program is designed for children and youth with developmental disabilities who are looking for a fun and exciting camp experience! Campers will get a chance to play inside and outside with a focus on developing friendships and achieving personal goals. Campers will work on social skills as they play their way through a week of games, crafts, songs and much more!

Week	Dates	Code
3	July 15 - 19	30925
7	Aug 12 - 16	30926



AGES 6 - 12 YRS
CAMP ON NINTH

Stouffville Arena
9:00am - 4:00pm

\$280

Welcome to Camp on Ninth – Stouffville's summer day camp offering a wide range of FUN summer programming! This camp offers action-packed days where creativity and camaraderie flourish. With a dynamic mix of both indoor and outdoor activities, Camp on Ninth is the perfect place for young adventurers to make lasting memories and forge new friendships. Join us for the ultimate FUN summer programming and let the adventure begin!

Week	Theme	Dates	Code
1*	Let's: LEGO	July 2 - 5	31006
2	Ooey Goopy Science	July 8 - 12	31007
3	Dance Around the World	July 15 - 19	31008
4	Beach Party Bonanza	July 22 - 26	31009
5	Ooey Goopy Science 2	July 29 - Aug 2	31010
6*	Wizardry and Magic Academy	Aug 6 - 9	31011
7	Let's: LEGO 2	Aug 12 - 16	31012
8	Creative Campers	Aug 19 - 23	31013
9	DIY Science and Crafts	Aug 26 - 30	31014

*\$224 for weeks 1 and 6



COME VOLUNTEER WITH OUR CAMPS THIS SUMMER!

Follow these five easy steps to become a camp volunteer:

1. Visit townofws.ca/volunteer.
2. Create a volunteer account online.
3. Sign up for an interview time slot.
4. Provide a Vulnerable Sector Check (VSC).
5. Complete the General Orientation Workshop (online).

Volunteers must be at least 14 years of age

For more information, please contact volunteer@townofws.ca



AGES 6 - 12 YRS SHARP SKILLS SKATING

📍 **Stouffville Clippers Sports Complex** **\$310**
9:00am - 4:00pm

Have an "ice" summer! This beginner level skating program is designed to introduce basic skating skills. Campers will gain confidence through a variety of games and activities with a focus on skating fundamentals including starting, stopping, balancing and gliding. Off-ice activities include games, crafts and much more.

Week	Dates	Code
7	Aug 12 - 16	30976
9	Aug 26 - 30	30964



AGES 8 - 12 YRS OUTDOOR ADVENTURE CAMP

📍 **Bruce's Mill Conservation Park** **\$330**
9:00am - 4:00pm

Get your camper outdoors this summer! Stouffville is proud to partner with the Toronto Region Conservation Authority (TRCA) to offer this exciting outdoor camp at the beautiful Bruce's Mill – a hidden gem located just eight minutes from downtown. Campers will engage in a variety of outdoor activities including an afternoon at Treetop Trekking: Treewalk Village. Campers will also learn a number of outdoor survival skills taught by TRCA skilled instructors.

Week	Dates	Code
1*	July 2 - 5	30955
2	July 8 - 12	30956
3	July 15 - 19	30957
4	July 22 - 26	30958
5	July 29 - Aug 2	30959
6*	Aug 6 - 9	30960
7	Aug 12 - 16	30961
8	Aug 19 - 23	30962
9	Aug 26 - 30	30963

*\$264 for weeks 1 and 6

Note

Did you know that our Jr. Firefighter Camp operates in partnership with Town of Stouffville's Fire and Emergency Services?



AGES 8 - 12 YRS JR. FIREFIGHTER CAMP

📍 **Stouffville Clippers Sports Complex** **\$310**
9:00am - 4:00pm

See what it takes to be a firefighter! Campers will learn the basics of fire cause and prevention, fire safety, firefighting equipment and its usage, and the importance of teamwork!

Week	Dates	Code
4	July 22 - 26	30936


AGES 9 - 13 YRS
BASKETBALL CAMP

📍 **Stouffville District Secondary School** **\$310**
 9:00am - 4:00pm

♥ **Before and after care available** - see page 35 for details

Focus on advanced skill development through a week of training sessions. Our coaches provide opportunities in one-to-one and small group settings to improve your camper's game. Perfect for the intermediate player intending to level up their basketball game.

Week	Dates	Code
2	July 8 - 12	30977
3	July 15 - 19	30979
7	Aug 12 - 16	30978



AGES 9 - 13 YRS
BADMINTON CAMP

📍 **Stouffville District Secondary School** **\$310**
 9:00am - 4:00pm

♥ **Before and after care available** - see page 35 for details

This is camp is for the kid who loves everything badminton! Campers will learn serves, forehands and overhands as well as strategies for singles and doubles games. Fun games and activities will contribute to your child's overall skill level. Campers will also engage in collaborative games and activities.

Week	Dates	Code
4	July 22 - 26	30993
5	July 29 - Aug 2	30992
6*	Aug 6 - 9 *	30994

*\$248 for week 6


AGES 10 - 12 YRS
SPORTS CAMP: SENIOR

📍 **Leisure Centre** **\$280**
 9:00am - 4:00pm

♥ **Before and after care available** - see page 35 for details

This camp is for the camper who loves everything sports! Campers will engage in a wide range of sports opportunities throughout the session, as well as collaborative games and activities. Activities are geared to the interests of campers each session and are always kept fresh and exciting.

Week	Dates	Code
1*	July 2 - 5	30965
2	July 8 - 12	30966
3	July 15 - 19	30967
4	July 22 - 26	30968
5	July 29 - Aug 2	30969
6*	Aug 6 - 9	30970
7	Aug 12 - 16	30971
8	Aug 19 - 23	30972
9	Aug 26 - 30	30973

*\$224 for weeks 1 and 6

Note **Camps Open House - May 25**
 Get a sneak peek into the exciting summer ahead and secure your child's spot for a memorable season of learning and laughter.


AGES 13 - 15 YRS
COUNSELLOR IN TRAINING (CIT) CAMP

📍 **Stouffville District Secondary School** **\$330**
 9:00am - 4:00pm

This program focuses on developing the skills required to become an effective camp counsellor and leader in the community. Your child will learn about group dynamics, effective communication strategies, safety and behaviour management and program planning. This program includes one week of learning through hands-on workshops and a one-week volunteer placement where campers will implement what they've learned at one of the Town's day camp programs. CITs will receive a formal evaluation at the end of their placement.

Week	Dates	Code
3 & 4	July 15 - 26	31695



SWIMMING AND FITNESS



AGES 6 - 12 YRS SPLASH ADVENTURES

Leisure Centre **\$310**
9:00am - 4:00pm

♥ Before and after care available - see page 35 for details

Splash Adventures helps campers cool off from the heat. Campers will have the opportunity to sharpen their strokes and enhance their water safety know-how through daily swim instruction. Swimmers will be placed in multi-level groups which will allow instructors to teach students at various skill levels within the same group. Additional camp activities will include crafts, songs, and games. Recommended next swimming level will be provided at the end of camp.

Week	Dates	Code
2	Jul 8 - 12	31002
4	Jul 22 - 26	31003
6	Aug 6 - 9*	31004
8	Aug 19 - 23	31005

*\$248 for week 6

AGES 8 - 13 YRS JUNIOR LIFEGUARD CAMP

Leisure Centre **\$310**
9:00am - 4:00pm

♥ Before and after care available - see page 35 for details

Junior Lifeguard camp provides opportunities to develop leadership skills for the future. Campers will work on swimming strokes, first aid, lifesaving techniques and gain aquatic safety knowledge. There will be an introduction to the new sport of Lifesaving. Additional camp activities will include crafts, songs, and games. Prerequisite: swimming ability - Swimmer 4 and up.

Week	Dates	Code
1	July 2 - 5*	30997
3	July 15 - 19	30998
5	Jul 29 - Aug 2	30999
7	Aug 12 - 16	31000

*\$248 for week 1





2024 CAMPS SNAPSHOT



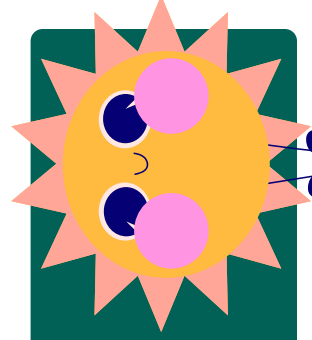
Title	Location	Ages	Week(s) Available	Page #
Outdoor Adventure Camp	Bruce's Mill	8 - 12 yrs	1 2 3 4 5 6 7 8 9	13
Mini Campers: Camp Lemonville	Lemonville CC	4 - 6 yrs	1 2 3 4 5 6 7 8 9	9
Mini Campers: Fun in the Sun	Latham Hall	4 - 6 yrs	1 2 3 4 5 6 7 8 9	9
Camp on Ninth	Stouffville Arena	6 - 12 yrs	1 2 3 4 5 6 7 8 9	11
Camp Ability	Stouffville Arena	6 - 12 yrs	1 2 3 4 5 6 7 8 9	11
Jr. Firefighter Camp	Clippers Sports Complex	8 - 12 yrs	1 2 3 4 5 6 7 8 9	13
Sharp Skills Skating	Clippers Sports Complex	6 - 12 yrs	1 2 3 4 5 6 7 8 9	12
Badminton Camp	SDSS	9 - 13 yrs	1 2 3 4 5 6 7 8 9	14
Basketball Camp	SDSS	9 - 13 yrs	1 2 3 4 5 6 7 8 9	14
STEAM Creators Camp	SDSS	6 - 10 yrs	1 2 3 4 5 6 7 8 9	10
Sports Camp: Junior	Leisure Centre	6 - 9 yrs	1 2 3 4 5 6 7 8 9	10
Sports Camp: Senior	Leisure Centre	10 - 12 yrs	1 2 3 4 5 6 7 8 9	15
Counsellor In Training (CIT) Camp	SDSS	13+ yrs	1 2 3 4 5 6 7 8 9	15
Splash Adventures	Leisure Centre	6 - 12 yrs	1 2 3 4 5 6 7 8 9	17
Jr. Lifeguard Camp	Leisure Centre	8 - 13 yrs	1 2 3 4 5 6 7 8 9	17
Teen Fit Camp	Leisure Centre	10 - 15 yrs	1 2 3 4 5 6 7 8 9	18
Drama Camp	19 on the Park	6 - 12 yrs	1 2 3 4 5 6 7 8 9	27
Musical Theatre	19 on the Park	6 - 12 yrs	1 2 3 4 5 6 7 8 9	27

Mystery Theatre	19 on the Park	6 - 12 yrs	1 2 3 4 5 6 7 8 9	27
Page to Stage	19 on the Park	6 - 12 yrs	1 2 3 4 5 6 7 8 9	28
Drama Camp 2	19 on the Park	6 - 12 yrs	1 2 3 4 5 6 7 8 9	28
Circus Spectacular	19 on the Park	6 - 12 yrs	1 2 3 4 5 6 7 8 9	28
Musical Theatre 2	19 on the Park	6 - 12 yrs	1 2 3 4 5 6 7 8 9	29
Global Grooves	19 on the Park	6 - 12 yrs	1 2 3 4 5 6 7 8 9	29
And, Scene	19 on the Park	6 - 12 yrs	1 2 3 4 5 6 7 8 9	29
Museum Detective	WS Museum	6 - 12 yrs	1 2 3 4 5 6 7 8 9	31
Wonderful Woods	WS Museum	6 - 12 yrs	1 2 3 4 5 6 7 8 9	31
Silly Science	WS Museum	6 - 12 yrs	1 2 3 4 5 6 7 8 9	31
Baking Bonanza	WS Museum	6 - 12 yrs	1 2 3 4 5 6 7 8 9	32
Discover Archaeology	WS Museum	6 - 12 yrs	1 2 3 4 5 6 7 8 9	32
Travel Adventures	WS Museum	6 - 12 yrs	1 2 3 4 5 6 7 8 9	32
Artful Antics	WS Museum	6 - 12 yrs	1 2 3 4 5 6 7 8 9	33
Cooking Chaos	WS Museum	6 - 12 yrs	1 2 3 4 5 6 7 8 9	33
Endless Summer	WS Museum	6 - 12 yrs	1 2 3 4 5 6 7 8 9	33



REGISTRATION OPENS
FEBRUARY 6, 2024 AT 12 NOON

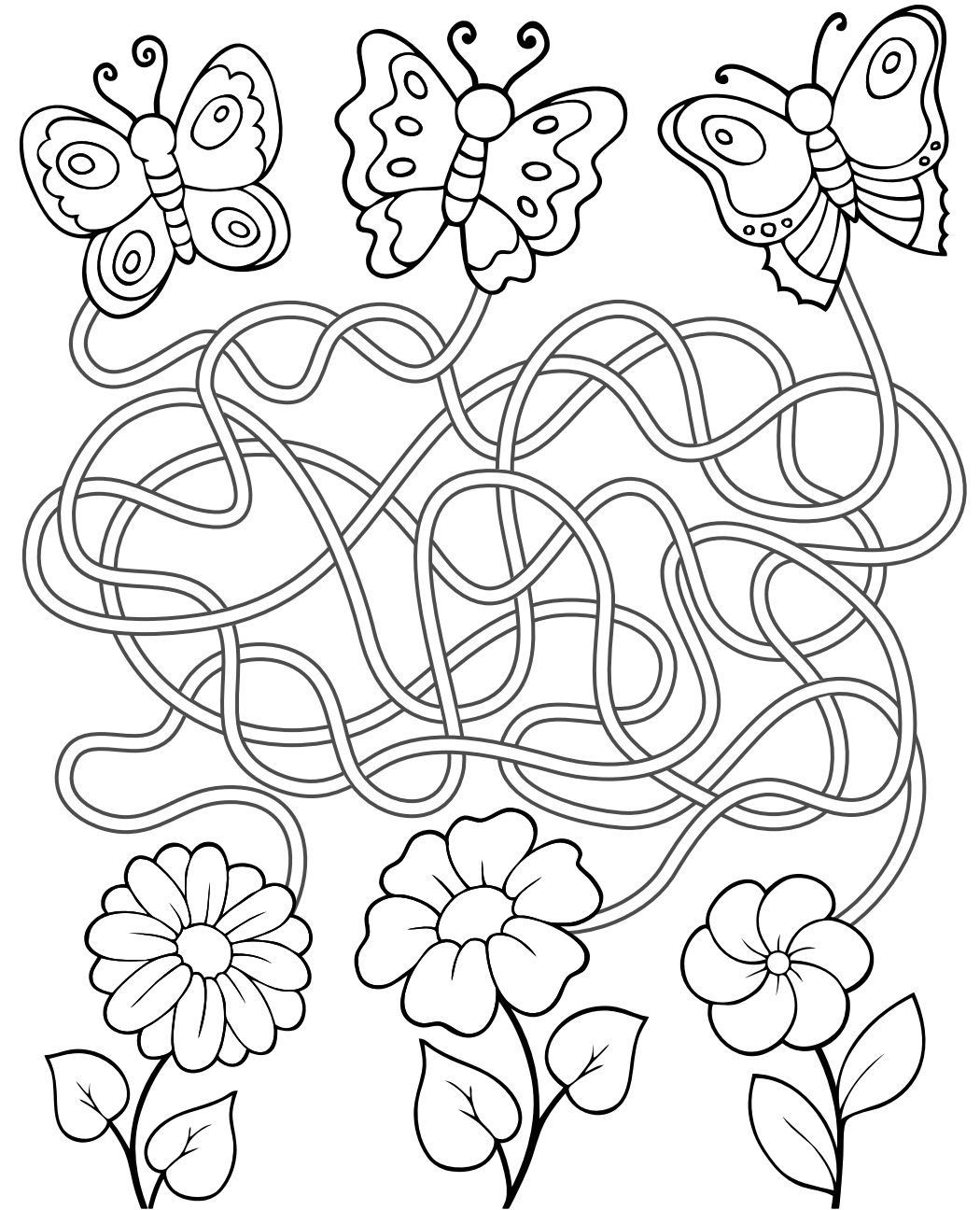
Register for camps by scanning the QR code provided,
or by visiting townofws.ca/active



UNDER THE SEA CROSSWORD

1. Whale
2. Dolphin
3. Jellyfish
4. Turtle
5. Crab
6. Starfish
7. Seahorse
8. Fish
9. Shell
10. Octopus

1. Whale 2. Dolphin 3. Jellyfish 4. Turtle 5. Crab 6. Starfish 7. Seahorse 8. Fish 9. Shell 10. Octopus



Help each butterfly find their flower!



19 ON THE PARK



AGES 6 - 12 YRS DRAMA CAMP

📍 19 on the Park
8:30am - 4:30pm

\$248

During this returning favourite, campers will build confidence and let their creativity shine! This camp is a fun way for kids to exercise their imagination and advance their oral presentation skills through warm-ups, performances and script learning.

Week	Dates	Code
1	July 2 - 5*	30984

*4-day week



AGES 6 - 12 YRS MUSICAL THEATRE

📍 19 on the Park
8:30am - 4:30pm

\$310

Love to sing and dance? Bring your talent to Musical Theatre Camp! During this returning favourite, campers will learn to sing and dance to their favourite musical hits. Inspired by Broadway, campers will learn how to express themselves through the musical arts.

Week	Dates	Code
2	July 8 - 12	30981

Note

Camp Hours

19 on the Park Camps run from 9:00am - 4:00pm, with drop off between 8:30am - 9:00am and pick up between 4:00pm - 4:30pm.



AGES 6 - 12 YRS MYSTERY THEATRE

📍 19 on the Park
8:30am - 4:30pm

\$310

Let your imagination run free! During this week, campers will create their own who-done-it mysteries and take them to the main stage.

Week	Dates	Code
3	July 15 - 19	30983





AGES 6 - 12 YRS
PAGE TO STAGE

19 on the Park **\$310**
8:30am - 4:30pm

During this returning favourite, campers will create their own storyboards and practice their creative writing skills to create their own scenes from scratch. Through scriptwriting and set design, campers will develop inspiring plays and work on stage presence and oral presentation skills by performing them live!

Week	Dates	Code
4	July 22 - 26	30986

AGES 6 - 12 YRS
DRAMA CAMP 2

19 on the Park **\$310**
8:30am - 4:30pm

Campers will learn how to create comedy sketches like their favourite TV shows. Along with learning the art of comedy, campers will perform their sketches at the end of the week. Participants will create scripts that are built to make people laugh, no laugh track necessary!

Week	Dates	Code
5	July 29 - Aug 2	30980

AGES 6 - 12 YRS
CIRCUS SPECTACULAR

19 on the Park **\$248**
8:30am - 4:30pm

Learn about what a day in the life at the high-top is all about! Activities for this week will be circus themed and include learning the art of clowning, miming, and more!

Week	Dates	Code
6	Aug 6 - 9*	30985

*4-day week



AGES 6 - 12 YRS
MUSICAL THEATRE 2

19 on the Park **\$310**
8:30am - 4:30pm

Time to reinvent some musical tales! Campers will revise well-known tales and make them their own by creating scripts and musical numbers to put on a Broadway-worthy production at the end of the week!

Week	Dates	Code
7	Aug 12 - 16	30982

AGES 6 - 12 YRS
GLOBAL GROOVES

19 on the Park **\$310**
8:30am - 4:30pm

This week, campers will learn all of the ways that people around the world express themselves through dance! Through choreographed numbers and exercises, campers will get an introduction to many different types of dance such as K-Pop, Bollywood and more! A choreographed performance will close out the week!

Week	Dates	Code
8	Aug 19 - 23	30987

AGES 6 - 12 YRS
AND, SCENE!

19 on the Park **\$310**
8:30am - 4:30pm

Make the most of the last week of summer at 19 on the Park! We've listened to the campers all summer long and have packed this week with their favourites from the world of dramatic arts! This week's activities have won the title of Fan Favourites from all other weeks of camp.

Week	Dates	Code
9	Aug 26 - 30	30988

Note **Camp Hours**

19 on the Park Camps run from 9:00am - 4:00pm, with drop off between 8:30am - 9:00am and pick up between 4:00pm - 4:30 pm.



MUSEUM

AGES 6 - 12 YRS
MUSEUM DETECTIVE

Whitchurch-Stouffville Museum
8:30am - 4:30pm

\$248

What's so mysterious about a museum? Become a skilled detective as you investigate fun museum mysteries, solve puzzles and riddles, and make a fun group exhibit!

Week	Dates	Code
1	Jul 2 - 5*	31877

*4-day week



Note

Camp Hours

Museum Camps run from 9:00am - 4:00pm, with drop off between 8:30am - 9:00am and pick up between 4:00pm - 4:30 pm.

AGES 6 - 12 YRS
WONDERFUL WOODS

Whitchurch-Stouffville Museum
8:30am - 4:30pm

\$310

Enjoy spending time in the great outdoors? Learn the basics of tree and plant identification, visit a log cabin, and more! Campers will also go on nature walks and work on eco-friendly projects to learn about the natural world around them.

Week	Dates	Code
2	Jul 8 - 12	31878

AGES 6 - 12 YRS
SILLY SCIENCE

Whitchurch-Stouffville Museum
8:30am - 4:30pm

\$310

We have fun down to a science! What experiments can be conducted using everyday materials? Discover the answer to this question and more during this returning favourite!

Week	Dates	Code
3	Jul 15 - 19	31879


AGES 6 - 12 YRS
BAKING BONANZA

Whitchurch-Stouffville Museum **\$310**
8:30am - 4:30pm

What do cupcakes, sugar cookies, snickerdoodles and other treats have in common? They're some of the goodies your camper will take home each day during this exciting baking camp! During this returning favourite, each day will bring new recipes from both modern and historic kitchens.

Week	Dates	Code
4	Jul 22 - 26	31880


AGES 6 - 12 YRS
DISCOVER ARCHAEOLOGY

Whitchurch-Stouffville Museum **\$310**
8:30am - 4:30pm

Dig into this adventurous archaeology camp! Find out what it would be like to work as an archaeologist. Create your own clay artifact and uncover hidden treasures.

Week	Dates	Code
5	Jul 29 - Aug 2	31882



AGES 6 - 12 YRS
TRAVEL ADVENTURES

Whitchurch-Stouffville Museum **\$248**
8:30am - 4:30pm

Let's travel the world! Campers will create a passport that they'll fill up with stamps and stickers as they 'travel the globe' through activities, crafts, and more.

Week	Dates	Code
6	Aug 6 - 9*	31881

*4-day week

Camp Hours

Museum Camps run from 9:00am - 4:00pm, with drop off between 8:30am - 9:00am and pick up between 4:00pm - 4:30 pm.

Note


AGES 6 - 12 YRS
ARTFUL ANTICS

Whitchurch-Stouffville Museum **\$310**
8:30am - 4:30pm

Do you love getting creative with paper, paints, pencils, and more? During this returning favourite, each day brings new projects at this popular creative camp.

Week	Dates	Code
7	Aug 12 - 16	31883


AGES 6 - 12 YRS
COOKING CHAOS

Whitchurch-Stouffville Museum **\$310**
8:30am - 4:30pm

Sink your teeth into this fun culinary camp! Split your time between cooking in the modern kitchen and learning how the Museum's heritage kitchens would have been used. During this returning favourite, cook and bake your way through an exciting week.

Week	Dates	Code
8	Aug 19 - 23	31884



AGES 6 - 12 YRS
ENDLESS SUMMER

Whitchurch-Stouffville Museum **\$310**
8:30am - 4:30pm

Summer doesn't have to end! Variety is the name of the game this week. Experience a week of fun by enjoying the most popular activities from this camp season!

Week	Dates	Code
9	Aug 26 - 30	31885

READY TO GET STARTED?

BEFORE AND AFTER CARE

Extended care is available at our **Leisure Centre and Stouffville District SS locations.**

Be sure to register for extended care at the same location where your child is enrolled in camp. When selecting extended care, ensure that the timing aligns with your child's camp schedule.



Before Care

7:30 - 9:00 am
\$32/4-day week
\$40/5-day week

After Care

4:00 - 5:30 pm
\$32/4-day week
\$40/5-day week



Look for this symbol throughout the guide to identify which camps offer before and after care!

Leisure Centre

Week	Before Care	Cost	After Care	Cost
1*	30924	\$32	30906	\$32
2	30918	\$40	30900	\$40
3	30919	\$40	30901	\$40
4	30920	\$40	30902	\$40
5	30921	\$40	30903	\$40
6*	30917	\$32	30899	\$32
7	30916	\$40	30898	\$40
8	30922	\$40	30904	\$40
9	30923	\$40	30905	\$40

*4 - day week

Stouffville District Secondary School

Week	Before Care	Cost	After Care	Cost
2	31691	\$40	31685	\$40
3	31692	\$40	31686	\$40
4	31693	\$40	31687	\$40
5	31694	\$40	31688	\$40
6*	31690	\$32	31684	\$32
7	31689	\$40	31683	\$40

*4 - day week



Summer Camps

Registration dates

Residents:

Tuesday, February 6, 2024

Online and in-person registration open at 12:00 noon

Non-residents:

Tuesday, February 13, 2024

Online and in-person registration open at 12:00 noon

Non-residents are subject to a 20% surcharge to register in Town programs



REGISTER AT TOWNOFWS.CA/ACTIVE

- **Have questions or need help with registration?**
Call 905-642-PLAY (7529)
- **Looking for fee subsidies?** Visit townofws.ca/register for help in supporting your family's active lifestyle.
- **Everyone needs a login for access to register.** Create a login by completing the Online Account Form at townofws.ca/register, and emailing it to leisure.services@townofws.ca along with proof of Stouffville residency.



Quick tip!

To speed up your family's registration, activate your family's account before registration opens on February 6th. Once you apply, we will have your account ready for you within 48 hours.

Withdrawing from Camp

Withdrawal requests must be received in writing at least seven (7) days prior to the first day of camp. Credits/refunds will not be issued after the start of camp unless there are extenuating circumstances. Withdrawal requests may be submitted by email or in person at the Leisure Centre using the Program Withdrawal Form. Refunds will not be granted for camp days missed due to illness, vacation, personal emergency, inclement weather, or closures due to unforeseen maintenance issues. **A \$27 administrative fee will apply to any camp withdrawals.**

INCLUSION SUPPORT AT CAMP

The Town of Stouffville is committed to ensuring our camps are inclusive and welcoming to meet the diverse needs of individuals of all abilities.

For more information about inclusion services, please contact our camp office: inclusion@townofws.ca

How to request an Inclusion Support Staff:

Prior to registration, contact our camp office via email at inclusion@townofws.ca or by phone at (905) 642-7529 ext. 5300

The deadline to register for inclusion support is **June 3, 2024**. After the deadline has passed, you may still apply; we will do our best to find support but it is not guaranteed.



How do I know if additional support is required?

Extra support may be required for camp participation if:

- Extra support is required at school in the classroom.
- A physical, development, and/or learning disability exists.
- Extra support is needed at home for basic care (toileting, feeding, changing, etc).
- Participant has a safety plan in place with their educational institution.

Families who do not disclose the needs of a participant before registration may be required to withdraw from the program. The Town of Stouffville refund policy will apply.



THINGS TO KNOW



Contact Information

Recreation Camps

(905) 642-PLAY (7529), ext. 5300
camps@townofws.ca

Museum Camps

(905) 727-8954
wsmuseum@townofws.ca

19OTP Camps

(905) 640-2322
19onthepark@townofws.ca



Camp Hours and Extended Care

- Camp hours vary based on location. Extended care is available at certain locations for an additional cost.
- Before Care runs from 7:30 am – 9:00 am and After Care runs from 4:00 pm – 5:30 pm.



Sign In & Out Procedures, Safe Arrival and Dismissal

All parents/guardians are required to sign their child in and out of camp daily. Only individuals who are listed on the designated camper pick up list will be able to pick up campers. Photo ID will be required at each pick up.



Medication

If a participant is required to take medication, please ensure you indicate this through the custom questions upon registration. You will then need to follow the procedure below:

1. All medications must be in their original bottle with the child's name clearly indicated and dosage.
2. Only send the correct dose for the day.
3. Campers must self-administer their medication with staff supervision.



Anaphylaxis and Epi-Pens

If your child requires the administration of an Epi-Pen, please ensure you indicate this through the custom questions upon registration. Participants who require Epi-Pens are responsible for ensuring that they have their Epi-Pens with them while attending camp. Epi-Pens must be carried by the participant, in a waist pack that is easily identifiable. Campers must self-administer their Epi-Pen with staff supervision.



Behaviour Guidelines

The Town of Stouffville is committed to ensuring a safe and inviting environment for all participants in our recreation programs, including summer camps. Parents/guardians will be notified if behaviour expectations are not being met and will be asked to help create an action plan to address the behaviour(s). Serious behaviours are classified as those that compromise the immediate safety of oneself, staff, volunteers, and other participants. These will require immediate action from camp staff to ensure the safety and quality of programs provided.

Behaviour Colour Chart

Yellow

Action:

Bringing electronics to camp, being disrespectful to staff or another camper, taking something that is not theirs.

Result:

Verbal warning given to camper.

Orange

Action:

Bullying (repetitive unwanted actions towards another person), acting with inappropriate intentions, deliberately putting self or others at risk.

Result:

Phone call home to parent/guardian.

Red

Action:

Physical bullying, threats, bringing weapons to camp, stealing from another camper.

Result:

Parent/guardians will receive a call and camper will be sent home for a period of 24 hours. Depending on the severity of the situation, police may be called and the camper removed from camp.



Sun Safety

Campers are required to wear sunscreen and hats when outdoors. Campers should arrive with sunscreen already applied. Staff will provide time throughout the day for re-application of sunscreen.



Inclement Weather & Heat Alerts

All camps will continue during inclement weather and heat alerts, however activities may be modified to be low-energy, and outdoor activities will take place in the shade whenever possible, to limit campers' exposure to the sun. Additional water breaks will also be added. Please dress your campers appropriately for the weather.



WHAT TO BRING WITH YOU TO CAMP

Each day, campers should come prepared with:

-  a nut-free lunch, along with snacks and drinks
-  a reusable water bottle
-  sunscreen
-  a hat and suitable outdoor clothing
-  closed-toe shoes (sandals and Croc-style shoes are not suitable for our outdoor or indoor adventures!)
-  younger campers should bring an additional change of clothes

Note

Please clearly label all belongings. Please leave toys, electronics, and valuable items at home. Camp facilities and staff are not responsible for lost, damaged or stolen personal items.

STOUFFVILLE
DAY CAMPS

GET READY TO TAKE
SUMMER FUN TO A
WHOLE NEW LEVEL!

**STOUFFVILLE
DAY CAMPS**

REGISTRATION OPENS AT 12 NOON ON
FEBRUARY 6, 2024



Register for camps by scanning,
or at townofws.ca/active

*Memberships, activities, and programs are subject to HST. Non-residents are subject to a 20% surcharge to register in Town of Whitchurch-Stouffville programs.

