

Artist Application 2020

People's Choice Award \$300 Juror Awards: 1st \$500 2nd \$200 3rd \$100

Judges will be looking at originality/creativity, mastery of technique, overall impression of the body of work and the overall impact/presentation at the event.

Name		Name listed in program	
Complete Mailing Address			
Phone		E-mail	
Website		How did you hear about the event?	
50 Word Bio (written in third person using first name)			
Artistic Medium			
Will you donate a silent auction piece for charity? (item can be your choice but must have minimum value defined)			
Please list the forms of payment that you will be accepting on June 13th from those wishing to purchase from you during the show and sale:			
Requested Booth Space (refer to layout on page 2. Although we will try our best to provide you with one of your three choices, no spaces are guaranteed. We recommend booking early, as space is limited.)	1st Choice	2nd Choice	3rd Choice
Space Requirements (refer to Rates below)	Number of 10'x10' Exhibit Spaces	Rate	Bio & Photo (yes or no)
			Hydro (yes or no)

RATES

HST will be applied upon acceptance

	Early Bird Rate By December 31	Regular Rate After December 31	Student Rate
10'x10' Exhibit Space	\$75	\$90	\$50
Bio & Photo on Website and Facebook	\$20	\$20	\$20
Hydro (15A service, limited spots available)	\$20	\$20	\$20
Liability Insurance (required for ALL vendors)	n/a	\$17.70	\$17.70

Artists may purchase more than one 10'x10' exhibit space, however no exhibit space can be shared. Artists are to provide their own tents, chairs, hanging walls, and anything else required for their display. Instructions for payment will be emailed to you upon acceptance. Please do not send any form of payment until you have been accepted.

- 1) Artist Application Form
- 2) Curriculum Vitae and 50 Word Bio (in third person using your first name) if not included in application above
- 3) 10 [high resolution](#) images of the artwork that will be shown at Art in the Park

E-mail the above three items with this application form to julia.troiani@townofws.ca

All applications will be reviewed by a jury. Upon acceptance, you will receive a contract and request of payment.

The contract must be signed and returned along with your payment and [insurance coverage](#) to confirm your spot. If you do not already have your own insurance, please see our rates in the chart above.

Signed _____

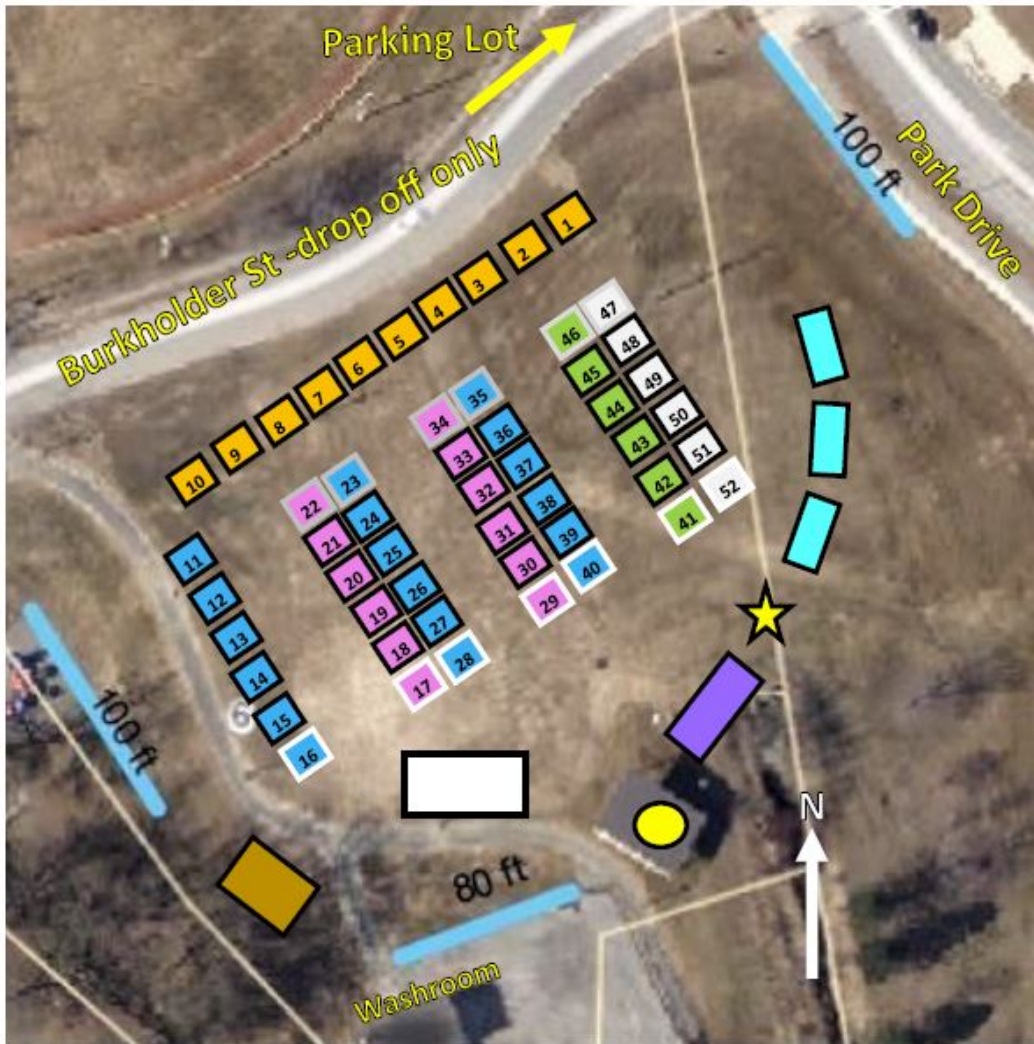
Date _____

Art in the Park | Application Layout Saturday, June 13, 11am to 5pm

Please note that this layout is approximate and will be adjusted closer to the event date, however your number will not change. Your final spot will be clearly outlined on the grass upon your arrival for set up based on your space number.

Burkholder Street can only be used during set up and take down times. All vehicles must park in the parking lot North East of the Park. Each Artist space is 10'x10'. Artists are to provide their own tents, chairs, hanging walls and anything else required for their display. Tables may be rented upon artist application, but not on the day of the event.

Set Up: 8am to 11am Take Down: 5pm to 7pm



- | | |
|---|--|
|  Food |  Artist- South Facing |
|  Sound System |  Artist- East Facing |
|  40x60 tent with picnic tables |  Artist- West Facing |
|  Town Cultural Activities |  Artist- Facing East with Hydro (15amp service) |
|  Sponsor |  Artist- Facing West with Hydro (15amp service) |
|  Voting Booth and Silent Auction | Grey Outline= Also North Facing |
| | White Outline=Also South Facing |