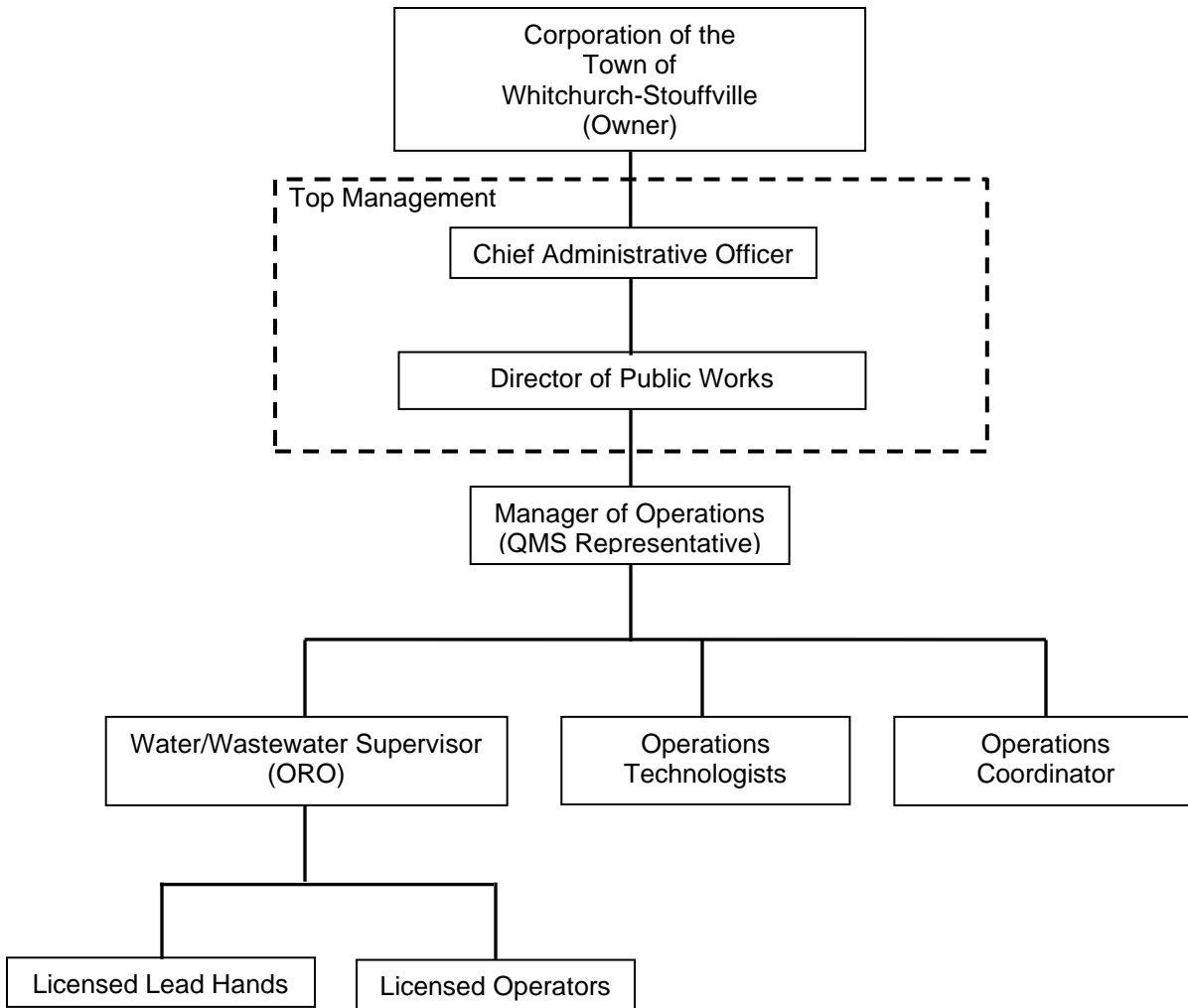
	Ballantrae/Musselman's Lake and Stouffville Water Distribution Systems	QMS-APP-09-01
	Operational Plan Quality Management System	
	QMS Organizational Structure	Revision: 4 June 28, 2019



Document Change History

Revision Number	Date	Change	Revision Made By:
2	February 23, 2018	Update to reporting structure	Peter W
3	January 2, 2019	Revisions to format of chart	Peter W
4	June 28, 2019	Removed Town of Whitchurch-Stouffville as OA	Peter W